



I-70 Floyd Hill

Floyd Hill CMGC Technical Team

Meeting Summary

August 11, 2023, 9:00 to 12:00 PM

Kraemer Floyd Hill Office: 35715 US-40 Building B, Ste 220, Evergreen, CO 90439

1. Introductions, Meeting Purpose and Project Updates

CDR Associates opened the meeting and reviewed the agenda.

TT Agenda 8-11-23

- *Project Updates*
- *West Section Review*
- *Introduce Package 3 Areas*
- *Water Quality Concerns*
- *Next TT Agenda & Next Steps*

TT members confirmed the meeting agenda with no changes.

2. Project Updates

Main Projects

- The Project Team has completed the second week of successful rock scaling operations. They intend to complete scaling in the East section in the next week.
- 20 minute road closures have been taking place during scaling operations to ensure public safety for both CDOT crews and the traveling public.
- Progress has been made on the storm sewer and work is continuing into Homestead.
- Some of the resulting dirt and rocks will be pushed into stockpiles along the construction site.
- **TT Question:** While the blasting is meant to stop at 3 o'clock the road doesn't get cleared immediately and thus cars are sometimes held beyond 3 o'clock. Is there a way to better communicate this with those traveling?
 - **Response:** Yes, the Project Team is working on tweaking the messaging to account for this.
- When possible, CDOT is working to not overlap scaling closures with other delays happening in the corridor to minimize traffic impacts.



I-70 Floyd Hill

- **Project Team Question:** The Project Team posed the following question to the TT: if the current frequency of text alerts is appropriate or would it be helpful to send additional alerts throughout the day? There are currently two texts sent out a day, one at 9am when scaling is set to begin, and one around 3pm when scaling is set to finish. If needed, the frequency could be increased to send a text every time the road is closed and every time it reopens throughout the 9am-3pm timeframe.
 - **TT Response:** The TT agrees that the current strategy of two texts a day is sufficient unless something unplanned happens in the corridor such as an accident. In this case, additional messages could be sent out on a case-by-case basis.
- The Project Team communicates with Golden when the road opens and closes and Golden communicates to Clear Creek County. Idaho Springs would like to receive direct information on road closures as well.
 - CDOT Public Information staff are trying to balance all of the various places that need the information and are working to get it out as soon as possible.
- **TT Comment:** Traffic for homeowners is becoming an issue.
 - Originally CDOT was channeling people to US 40 but on Wednesday (8/11), a rock crossed eastbound and westbound I-70 and landed on US 40. Therefore, in the interest of public safety, crews will now hold traffic on US 40 as well, but CDOT is working to mitigate impacts on homeowners.
 - The Project Team is trying to finish up the East Section scaling within the next week.
 - Once the team transitions to blasting, all traffic will be held, including I-70 EB, WB and US 40. However, blasting is expected to take place less frequently than scaling, likely 2-3 times a week.

Early Projects

- *The Genesee Wildlife Crossing* - The Team set girders on August 6th and work is moving forward. They are still tracking for a traffic shift sometime at the end of September/early October.
 - As the team works towards putting in cattle guards, there will be some closures.
- *US 40* - the Team has updated MOT to have a bypass lane near Homestead.



I-70 Floyd Hill

Environmental

- *Air Quality Dashboard* - Air quality has generally been good and there have not been any exceeding numbers based on the readouts from the air quality dashboard.

Utilities

- The Team is making progress on the utilities portion of the work and are on schedule to start the relocation work at the end of September.

ROW

- ROW discussions are moving forward and appraisers will be on site in the next few weeks.
- CDOT and Clear Creek County will also meet regarding long term maintenance.

Other updates:

- Alternate Cycling Route
 - The investigation of alternate greenway cycling routes is ongoing and the Team anticipates a more detailed update in the coming weeks.
 - This fall there will be a 6-month greenway closure to begin with, and more information will be coming on longer term reroute plans.
 - **TT Question:** Can the TT be told when the closure has been decided so we can get that information out to our members?
 - **Response:** Yes, the Project Team is shooting for September but will update the TT as plans get put in place.

3. Previous Design & Construction Topics

Alan Carter, Atkins, presented a West Section review including several updates on the schedule, MEXL entrance, and updates on sign locations. Alan shared the following updates:

West Section Review

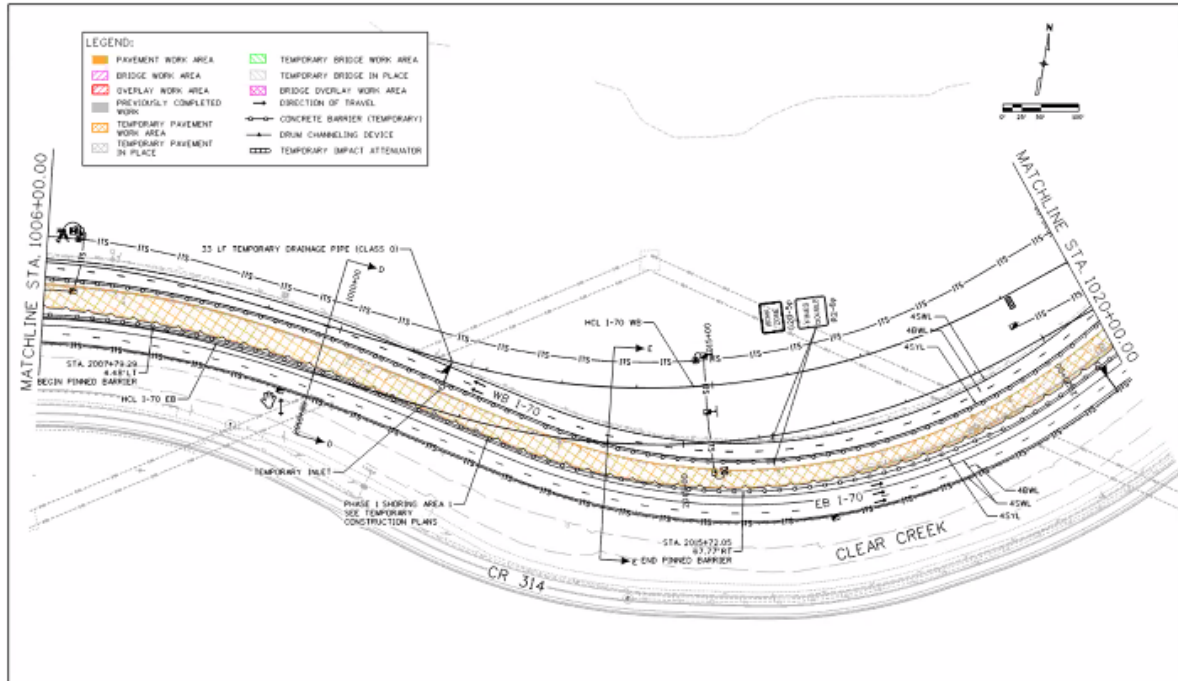
- Schedule Review
 - The Project Team is targeting a Notice to Proceed (NTP) early this November.
 - The first portion of work will be from early November to May and consist of working in the median which will allow traffic to move as far south as



I-70 Floyd Hill

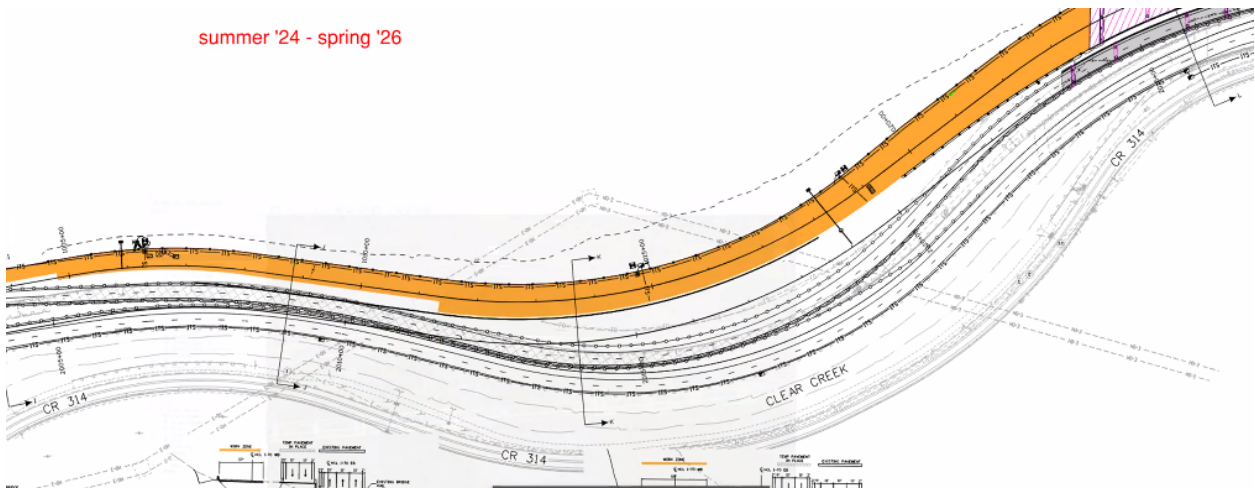
possible. This will require some temporary walls and a bridge across the creek.

- In May, the Team will move traffic to the new temporary alignment as seen in the graphic below:



- Phase two focuses on work near the quarries which will run from May 2024 until fall of 2026. There will be 18+ months of the temporary alignment here.

summer '24 - spring '26



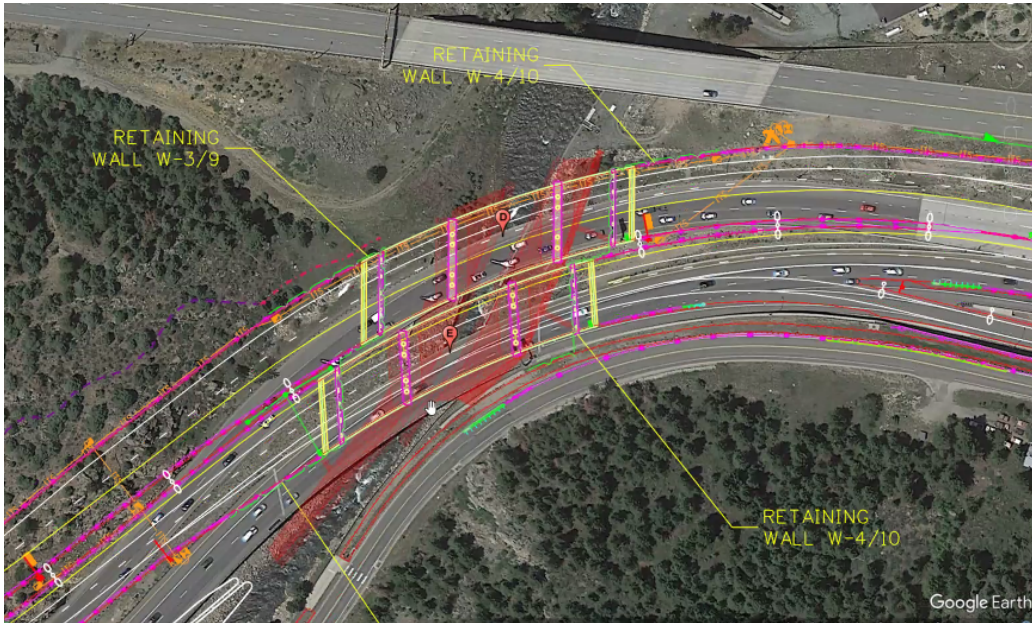


I-70 Floyd Hill

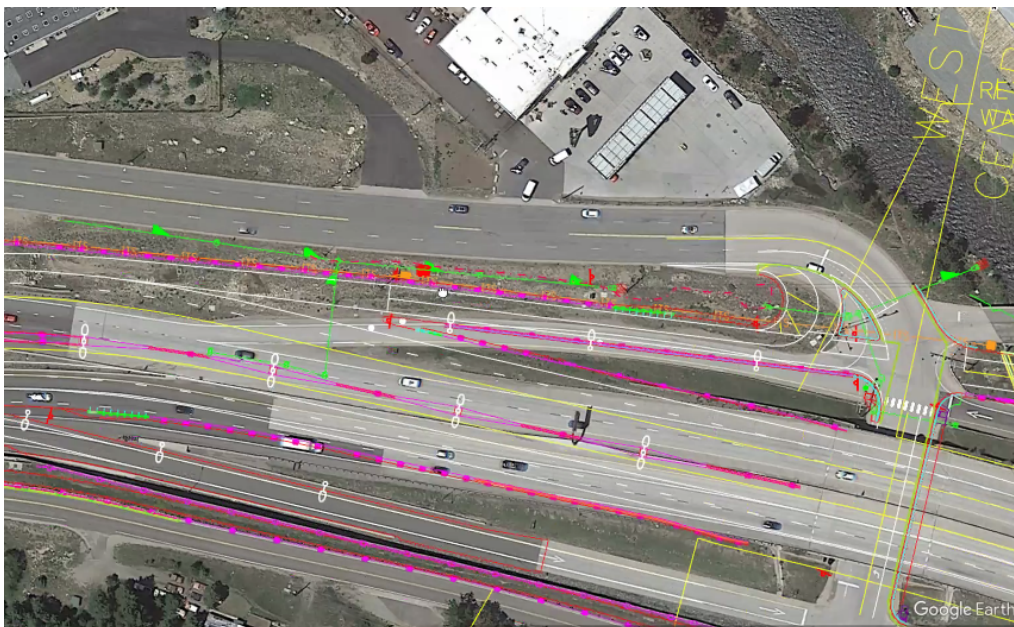
- Halfway through the rock cut, work will begin on the new Westbound alignment.
- Once the rock cut is completed, WB will be on the new bridge. Once that new alignment is in place then EB traffic will be temporarily routed on the new bridge.
- Phase 4 includes building the final median walls and guardrail.
- The Project Team is currently working on the full project schedule.
- **Question from Cindy Neely (Clear Creek County):** What will be the blasting/scaling timeline?
 - **Response:** Blasting once a week will be the average, at times could be 2-3 times a week, but there would be weeks in between blasts.
- Rock excavation will start next spring/summer (2024).
- Package 3 will be going on concurrently and there will be blasting in both sections.
- **Question from Ashley (Trout Unlimited):** How many temporary bridges will there be?
 - Response: Only one temporary bridge in this section.
- **Question:** How will work-related closures be communicated to rafting companies, pedestrians, and anglers?
 - **Response:** There will be signs to ask people to stay out of those areas when the work is ongoing.
 - More outreach is needed to these groups before next year.
 - Ashley and Gary at Trout Unlimited can help get the word out.
 - TT suggestion for CPW to run water sampling in that area throughout the summer.
- FOR Plans Review
 - Detour alignment has not changed since FOR.
 - Bridges D and E (pictured below) will now be a single pier column, which is a change from the FOR.



I-70 Floyd Hill



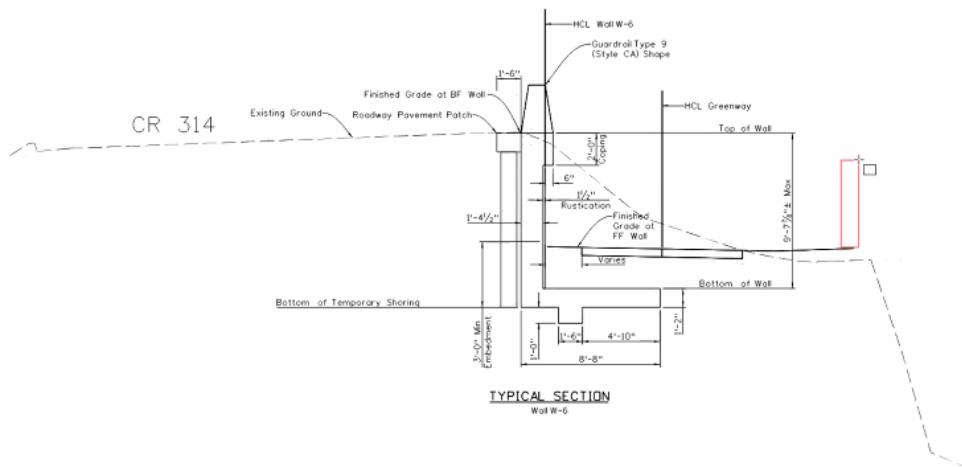
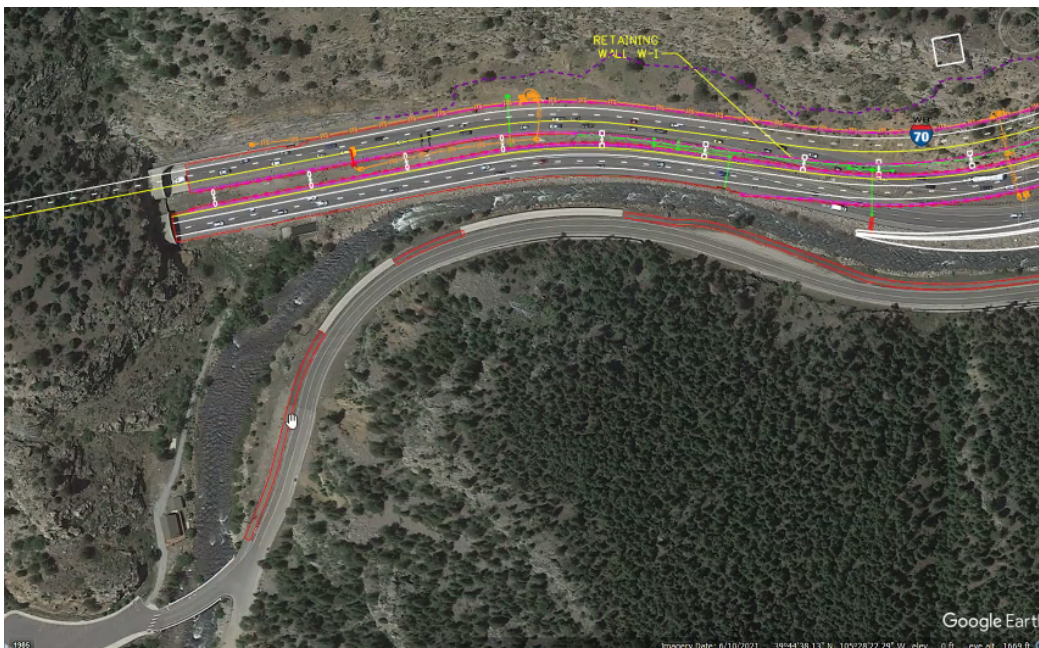
- One of the bigger changes from the FOR is the westbound onramp which will become a single lane entrance during off peak times. There will be an appropriate merge distance lane off of this ramp.





I-70 Floyd Hill

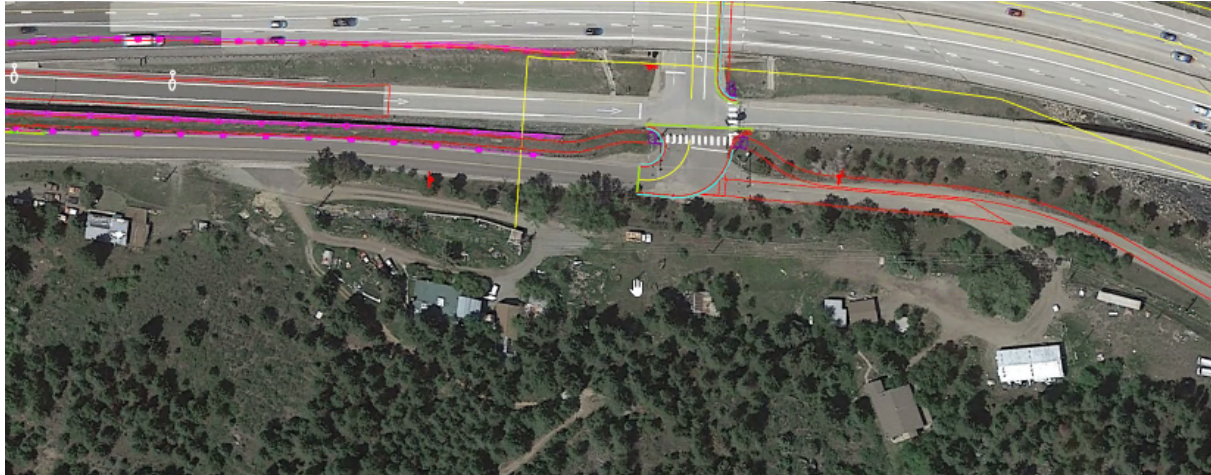
- **Question from Jonathan Cain (Idaho Springs):** Will there be a noise wall in place? We want to make sure we have this in place to mitigate impacts for Idaho Springs.
 - **Response:** Yes. The project team is currently working through some challenges related to utilities but will set something up offline to talk about this directly with Idaho Springs.
- The Greenway will include some new concrete sections and a new alignment between County Road 314. The trail will continue along the wall that's on Eastbound I-70. This is represented in red on the graphic below.



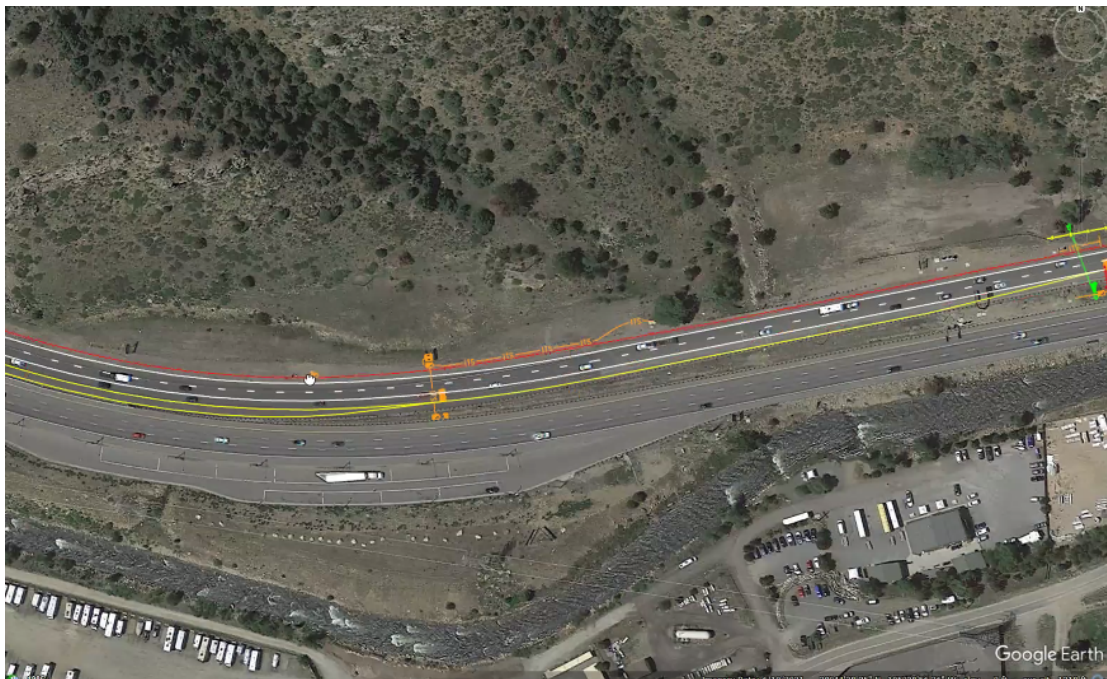


I-70 Floyd Hill

- There is a property owner along the trail with whom the Project Team is working to engage.
 - The Mayor has a relationship with the property owners and could serve as a potential contact to make this connection.
 - **TT Comment:** We should have the conversation with the property owners first before starting any work in that area.



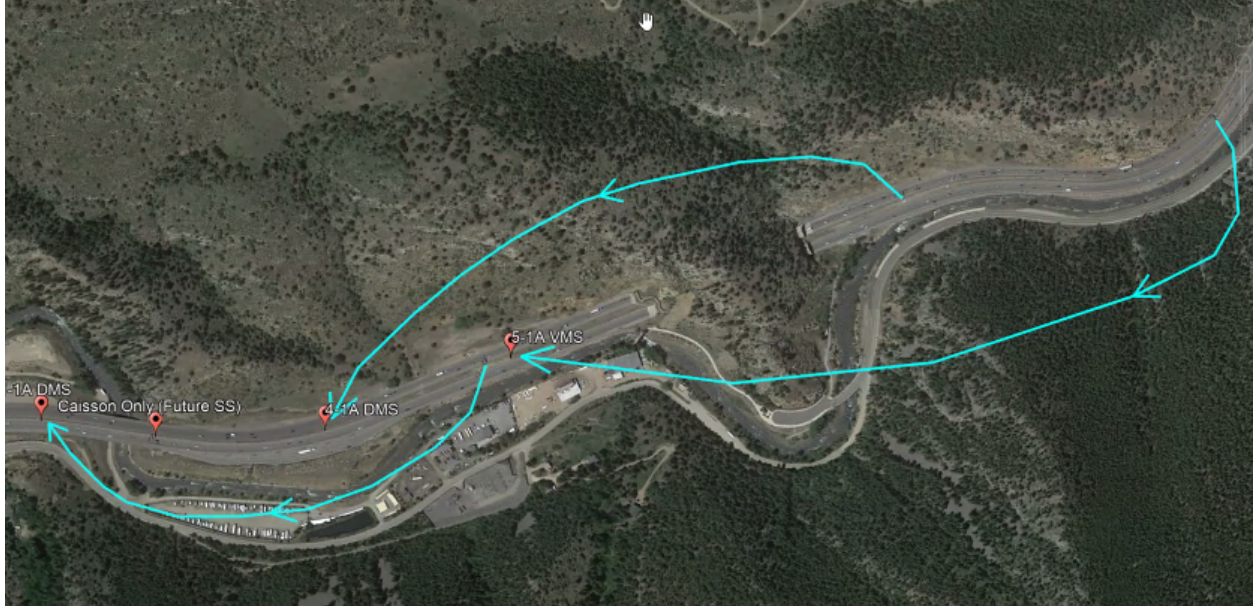
- MEXL Entrance Updates
 - The WB entrance will be moving west of the Veterans Memorial Tunnel.





I-70 Floyd Hill

- The locations of signs will be updated to reflect this change.



- CTIO has restricted the signage work to a 3-week window. The first two signs impact the median work so they will need to be moved before the rest of the West Section work begins.
- **Question:** Will this be the permanent location of the signs?
 - **Response:** Yes.
- **Rockfall Mitigation**
 - Howard Hume, HDR, presented on the rockfall mitigation efforts that are ongoing.
 - Based on additional geotechnical information, the Project Team is proposing more of a cut/excavation to the existing rock base.
 - The proposed drape is similar to what can be seen at exit 239 and will be approximately 150 ft high x 500 ft across and anchored at the top.
 - There are different proposed options that include drape and fencing and the Team is still evaluating which option will best be able to minimize the risk from potential rockfalls.



I-70 Floyd Hill

- West Section Commitment Tracking Sheet
 - Daniel Estes, CDR Associates, introduced the West Section CSS Commitment Tracking sheet. This will be sent out after the meeting for the TT to provide feedback.
 - **ACTION:** CDR to distribute Commitment Tracking Sheet for TT review.
 - The TT identified a need for a PLT meeting soon to determine what the construction PLT will look like versus the design PLT.
 - **ACTION:** Add the Construction PLT as a topic on the next TT meeting agenda.

4. Current Design & Construction Topics

Introduce Package 3 Areas

- Access Road
 - The Project Team is working on an FIR submittal for next week for the Access Road to Bridge A. This portion will include a lot of wall construction. See images for location and rendering here:





I-70 Floyd Hill

- New geometric refinements have allowed for optimization to lower the wall along the creek and virtually eliminate the wall in multiple sections near the creek. This optimization can be seen in the image on the right below:



- West of Saddle
 - This section includes a lot of temporary pavement. The Team is filling in the median for a temporary shift in traffic/detour.
- Package 3 is the first phase needed so that on day one of the true Central Section, we are ready to move traffic.
 - The Team thinks that one temporary bridge will be appropriate to construct along the saddle cut to ensure alternate access for work to commence.

Water Quality Concerns

Daniel Estes, CDR Associates, shared a recap of the discussion from the previous TT meeting which included concerns around data and the differing scopes of the issue as well as an interest in a collaborative approach to meaningfully address the issue including putting together an ITF. Further TT discussion included the following:

- Trout Unlimited has an interest in the creation of a data hub.
- **TT Questions/Comments:**
 - What are ways we can leverage the Bakersville project?



I-70 Floyd Hill

- We have good water design systems, how can we find out more about those?
- How can we leverage resources already out there?
- There is an opportunity to identify testing and mitigation beyond just data.
- At the project level, issues specifically within the project's scope should be identified and isolated, and then we can look at issues at the regional level. There is a need to broaden the latter conversation to include entities beyond CDOT.
- There is a need to start looking at best practices and the ongoing evolution of these.
- The TT expressed support for creating a Floyd Hill Water Quality ITF
 - **ACTION:** CDR to follow up to solicit participants for this ITF from the TT group.
 - **ACTION:** Once participants are identified, CDR to set up ITF in the next month and figure out the scope of the ITF focusing on tangible actions.
- Another suggestion from the group was to bring this water quality issue to SWEEP or the Collaborative Effort.

There was TT consensus to move forward in the next month with setting up a Floyd Hill Water Quality ITF and bringing forth ideas to create the substance and scope of the ITF discussion.

6. Wrap Up and Next Steps

- Next TT meeting is August 25th

ACTION ITEMS:

- **ACTION:** CDR to distribute Commitment Tracking Sheet for TT review.
- **ACTION:** Add the Construction PLT as a topic on the next TT meeting agenda.
- **ACTION:** CDR to follow up and solicit participants for the Floyd Hill Water Quality ITF from the TT group.
- **ACTION:** Once participants are identified, CDR to set up ITF in the next month and figure out the scope of the ITF focusing on tangible actions.



I-70 Floyd Hill

5. Attendees

Matt Hogan (Kramer); Ashley Giles, Gary Frey (TU); John Curtis, Jo Ann Sorenson (UCCWA); Bill Coffin (Saddleback Community POA); Cindy Neely, Amy Saxton (Clear Creek County); Margaret Bowes (I-70 Coalition); Tracy Sakaguchi (CMCA); Mike Vanatta, Stefi Szrek (Jefferson County); Vanessa Halladay, Mandy Whorton (PEAK Consulting); Jonathan Cain (Idaho Springs); Mike Raber (Clear Creek Bicycle Users Group); Abbie Modafferi, Ryan Sullivan, Kurt Kionka, Stacia Sellers, Jeff Hampton, Tyler Weldon (CDOT); Alan Carter, Anthony Pisano (Atkins); Julie Gamec (THK); Jessica North (Clear Creek County School District); Lisa Wolff (Floyd Hill POA); Daniel Estes, Julia Oleksiak, Jonathan Bartsch (CDR Associates); Howard Hume, Tammy Hefron (HDR)